

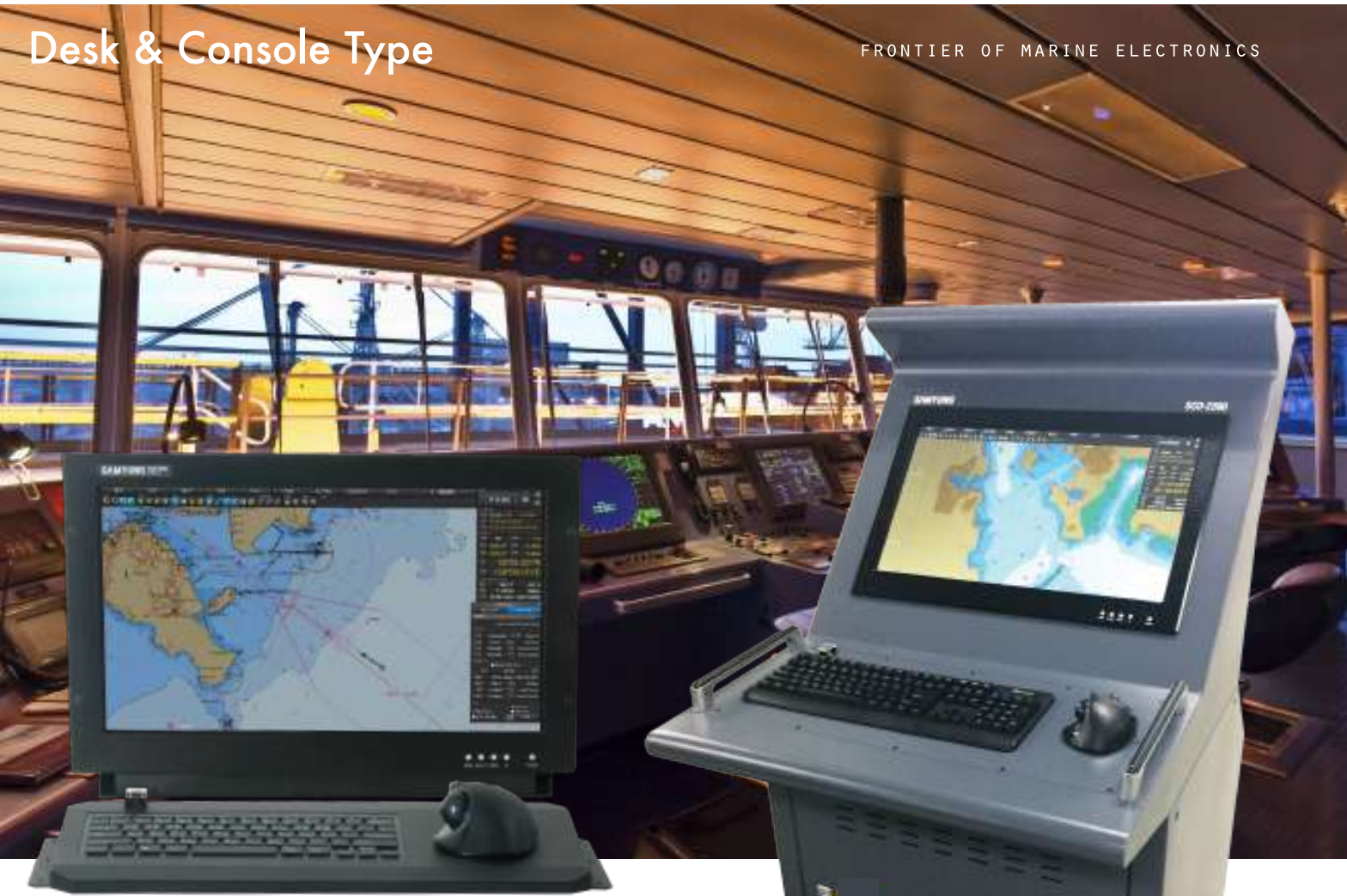
TOTAL CONTROL ON YOUR VOYAGE

ECDIS

Electronic Chart Display & Information System
SCD-2000(19") / SCD-2000(23") / SCD-2300(23")

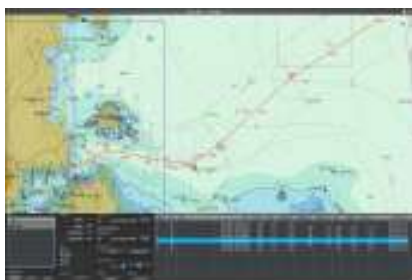
Desk & Console Type

FRONTIER OF MARINE ELECTRONICS



- ✔ 19"/ 23" Color LCD Display (Desk & Console Type)
- ✔ Route planning/ Route control
- ✔ Route monitoring/ Heading monitoring
- ✔ Automatic alarm system
- ✔ AIS and ARPA target(Chart overlay)
- ✔ Radar overlay(Optional)

ECDIS MANDATORY PERFORMANCES



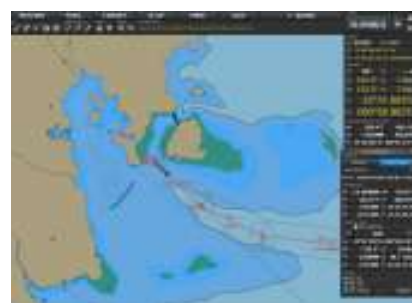
ROUTE PLANNING

The ECDIS plans and sets a sailing route on the separate window for the vessel routing and checks in advance possible problems in the planned route through a route test. Also the ECDIS provides the Great Circle route for a long distance voyage.



VOYAGE RECORDING

The ECDIS employs the tracks on AIS, ARPA targets and which own vessel passed by previously under the given conditions. Also the tracks are shown on the screen or saved as a form of external file.



ROUTE MONITORING

The ECDIS applies a planned route on the chart area to monitor the voyage. Also it provides necessary information for voyage and the alarm operates automatically in case of the vessel is out of route.



HEADING MONITORING

The ECDIS creates a monitoring area as large as the angle set up in the direction where the vessel advances forward. Also the alarm on when a particular object comes up within a surveillance area.

FEATURES_

Spectacular user friendly interface

✓ Menu bar
 ✓ Toolbar for quick execution of frequently used functions and check up the current status
 ✓ Alarms occurring at a single glance
 ✓ Wide display view
 ✓ Easy inputting of latitude and longitude. Automatical punctuates of [.] , [/] according to the input formats

<Main screen>

✓ Chart area

Official IHO charts (S-57 and S-63) marked on it with own vessel symbols and target symbols etc.

IMO and IEC REGULATIONS

- Res.MSC.232(82)
- S-57 Ed 3.1.2
- S-52 Ed 3.4 (PL 3.4)
- S-63 Ed 1.1.1
- IEC-61174 Ed 3.0
- IEC-62288 Ed 1.0
- IEC-60945 Ed 4.0
- IEC- 61162-1 Ed 4.0

WHAT WE OFFER

24Hour Global A/S



Training

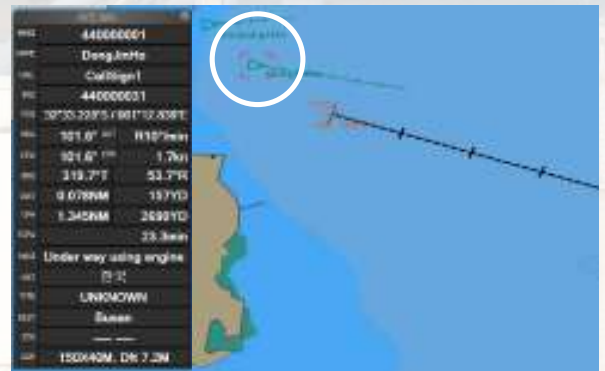


Korean/ English booklet
Lecture and training

AIS TARGET / ARPA TARGET

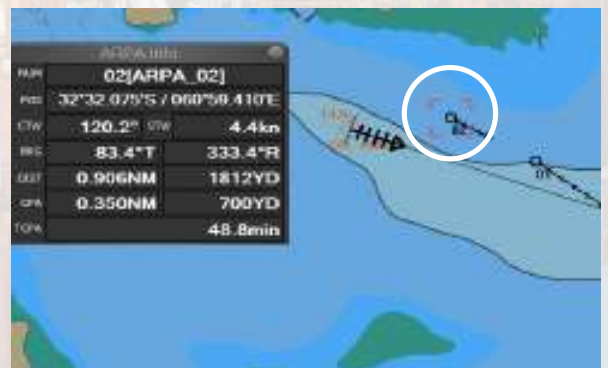
The ECDIS sets up hazardous targets using CPA/TCPA data. If it is recognized as a hazardous target, the target symbol alters the color to red and alarm warns.

AIS TARGET



AIS target is marked as triangle and if the target is active, the ECDIS provides various information of the target such as MMSI, name, location, bearing, velocity, distance from the vessel and CPA/TCPA. If AIS target is active, the mark of its heading line appears. Also if the AIS target has the information of its course and velocity, it is shown as a velocity vector.

ARPA TARGET



ARPA target is marked as a black circle with a velocity vector and if the target is active, the ECDIS provides information on the target number, location, bearing, velocity, distance from the vessel and CPA/ TCPA.

ALARM

In case of hazardous situation, alarm warns immediately with information on each case. If the situation cleared, it is deleted from the list automatically.

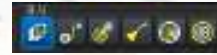
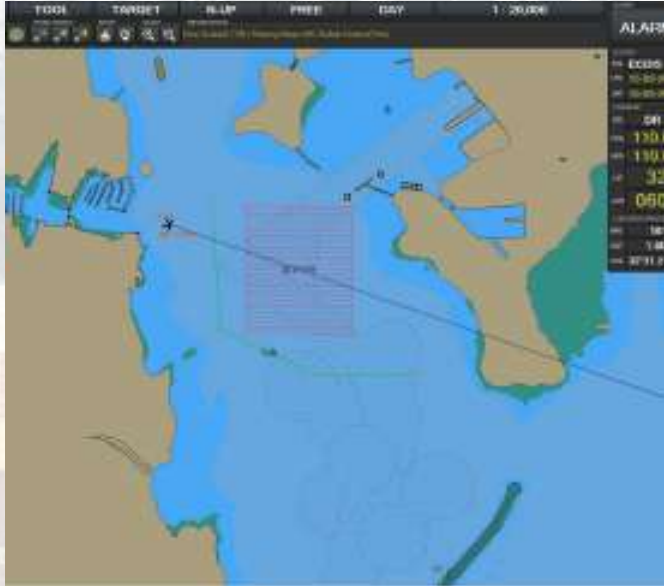
ALARM LIST			
ALARM TYPE	DESCRIPTION	TIME	POSITION
HAZARDOUS TARGET	FEED-102	2008-08-11 05:19:42:00	32°35.237'S / 121°12.438'E
HAZARDOUS TARGET	FEED-102	2008-08-11 05:19:42:00	32°35.237'S / 121°12.438'E
HAZARDOUS TARGET	FEED-102	2008-08-11 05:19:42:00	32°35.237'S / 121°12.438'E

Alarm warns when a particular object found within the monitoring area in which the vessel forwards.

CREATE YOUR OWN MAP BY ONE CLICK

[DRAW TOOL] offers a notebook to the user to record in ECDIS.

You can create and save the objects such as mark, line, polygon, circle, sector, arc, etc., regardless of the chart data.



One click on an item in [DISPLAY MARK] for on and off of user's own map.



If the mark is the symbol for tide, the user can appoint a direction(CRS) together.



Zoom in and out of the chart by trackball wheel.

SPECIAL FEATURE

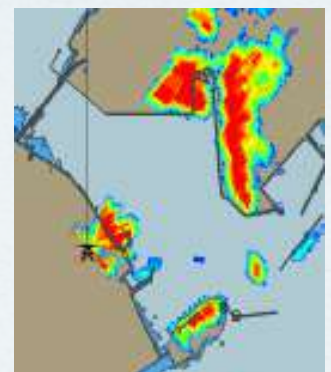


The ECDIS utilises Fishing Zone on the Sea map of South Korea.

OPTIONAL FEATURE

RSC(Radar Image)

Radar images appear centering the vessel in the chart area by receiving radar image signals.



SAMYUNG'S TYPE SPECIFIC ECDIS TRAINING COURSE

ECDIS is far more than the image of a chart displayed on an electronic screen. ECDIS is a highly sophisticated system which, besides the navigational functions, includes components of a complex, computer-based information system. In total, the system includes hardware, operating system, ECDIS software, sensor input interfacing, electronic chart data, rules for presentation and display, status and parameters of alarms and indications, etc. All these items are accessed through an appropriate human-machine interface. As such, care must be taken when navigating with ECDIS to avoid

- Incorrect operation
- Misinterpretation
- Malfunction or, even worse,
- Over-reliance on this highly-automated navigation system



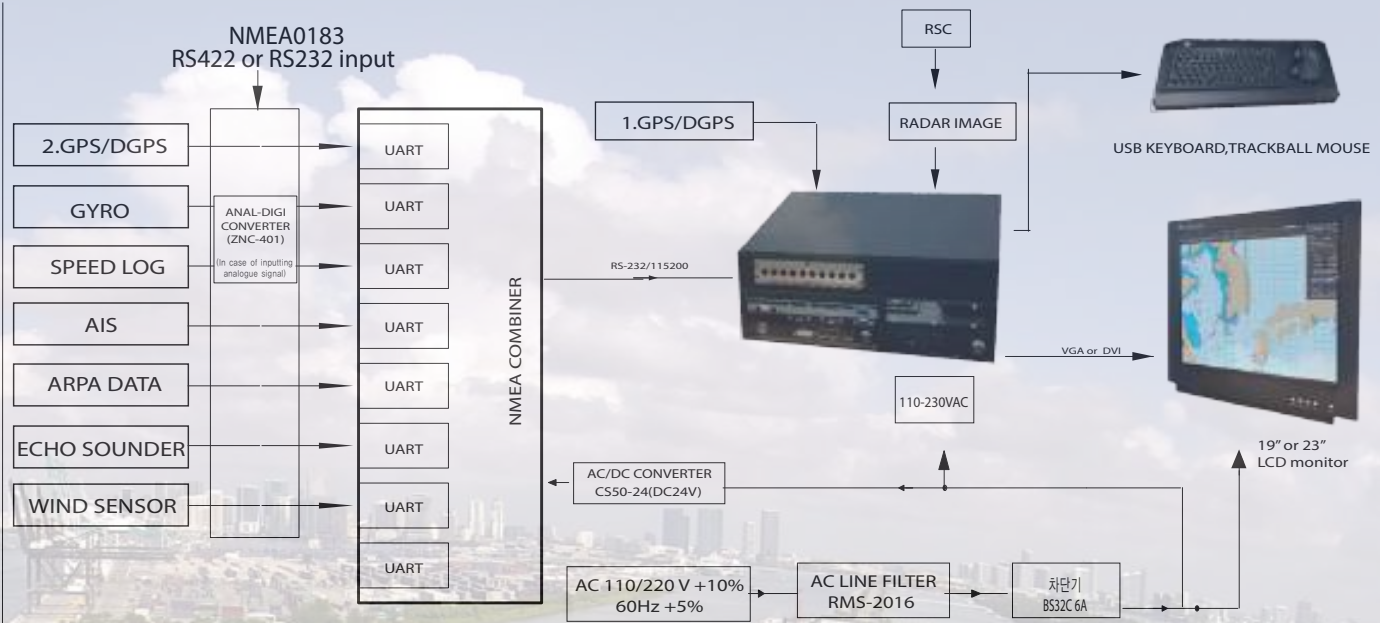
형식 승인증서 CERTIFICATE OF TYPE APPROVAL		
발급번호: 2015-155 호 Issuing No.: 2015-155		증서번호: 제 2015-047 호 Certificate No.: 2015-047
신청인 Applicant	①상 호 Company	삼영엔씨(주) SAMYUNG ENC Co., Ltd.
	②대표자 Name	황원 HWANG WJUN
	③사업자등록번호 Registration No.	001-81-36166
제조사 Manufacturer	①상 호 Company	삼영엔씨(주) SAMYUNG ENC Co., Ltd.
	②주 소 Address	부산광역시 영도구 삼리로 69 69, Sangdo-ro, Yeongdo-gu, Busan
	③품 명 Name of Articles	전자해도표시스템 Electronic Chart Display and Information System(ECDIS)
승인 품목 Particular of Articles	④규 격 Size	
	⑤형 식 Type	SCD-2300
	⑥시험기관 Testing Laboratory	(국)한국조선해양기자재연구원 Korea Marine Equipment Research Institute
시험인증서 Issuing Cert. Report	⑦합격증명서번호 Certificate No.	25-11
	⑧발급일자 Date of Issue	2015-09-27
⑨비고 Remarks		
<p>본 인증서발급 시행규칙, 제38조제2항에 따라 이 증서를 발급합니다. This certificate is issued under Article 38.2 of the Enforcement Decree of the Ship Safety Act and the provisions of SOLAS (COLREG, IMO Res., LSA Code)</p> <p>2015년 09월 27일 2015 Y 09 M 27 D</p> <p>부산지방해양수산청 (국) Director General of the BUSAN Regional Oceans & Fisheries Administration</p>		

SAMYUNG ENC provides Type Specific ECDIS training course

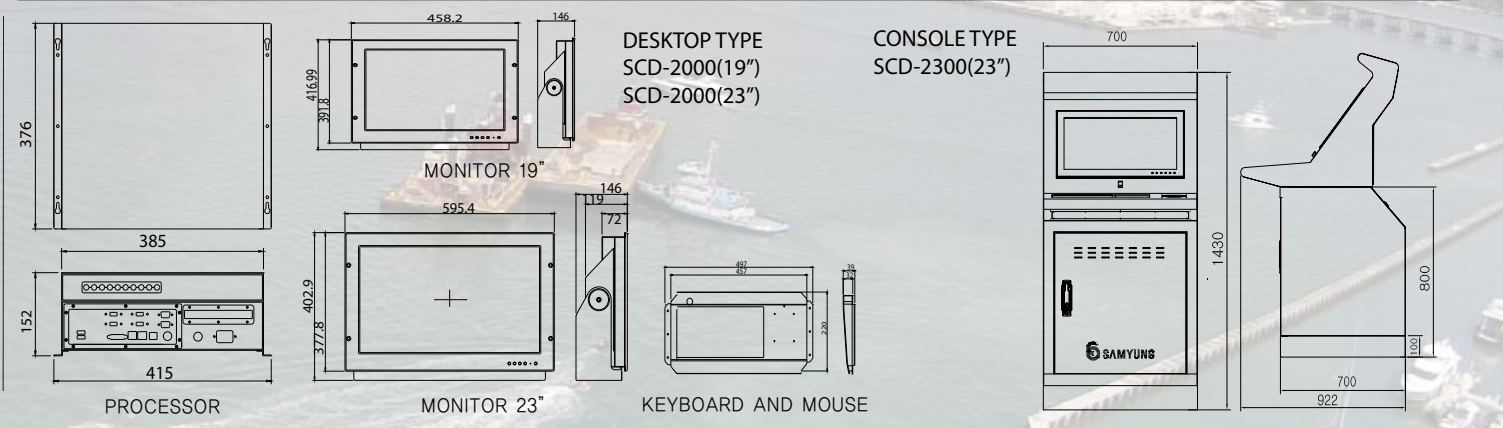
The course includes

- Safe operation of the ECDIS equipment
- Use of the functions for route planing and monitoring
- Selection, Display and interpretation of relevant information
- Ambiguities of data management
- Assessment of alarms and indications
- Errors of displayed data and their interpretation
- Real and potential limitations
- Over-reliance on ECDIS
- Knowledge of legal aspects and responsibilities related to electronic chart
- Awareness of the status of ECDIS and ECS
- Limitations of RCDS mode

INTERCONNECTION DIAGRAM



DIMENSION



SPECIFICATION

MODEL	SCD-2300, SCD-2000(19", 23")	INTERFACE	GPS GYRO COMPASS SPEEDLOG AIS RadarImage(option), ARPA ECHO SOUNDER Wind Sensor	HARDWARE	CPU: Intel i3-2330M 2.2GHz RAM: 4GB SSD: 128GB OS: Windows 7(SPI) 32bit DVD R-W Serial Port(RS-232) x 2 USB Port x 6 LAN Port Map Data ENC(S-57/S-63) SOFTWARE SCD S/W MONITOR LCD COLOR MONITOR
STANDARD	IMO MSC.232(82), IEC61174 Ed.3 IEC61162-1 Ed.4, IEC61162-2 Ed.1 IEC62288, IEC60945 Ed.4				
MONITOR	19" COLOR LCD(1280X1024) 23" COLOR LCD(1920X1080)				
BRIGHT	DAY, DUSK, NIGHT				
DISPLAY	NORTH UP, COURSE-UP, ROUTE UP, HEADING UP				
DATA PRESENTATION	CHART : S-57, S-63 AND OFFICIAL/MANUAL UPDATE, QUERY INFORMATION OWNSHIP: SYMBOL, POSITION, COURSE, HEADING, SPEED TARGET(AIS, ARPA): SYMBOL, COURSE, SPEED, BEARING, DISTANCE, CPA/TCPA, OTHERS INFORMATION ETC: USER CHART, EBL/VRM, RANGE RING...				
ALARM INFORMATION	DANGEROUS , MONITORING , SENSOR , DETECTION ALARM AND SEVERAL ALARMS				
POSITION CALCULATION	DEAD RECKONING WITH GYRO AND SPEED LOG DATA				
ROUTE PLANNING	PLANNING BY RHUMB LINE AND GREAT CIRCLE				
NAVIGATION RECORDING	LATEST 24HOURS OF NAVIGATION DATA TO BE RECORDED				
ROUTE MONITORING	DISPLAY XTD, BTW, DTW, TTG, ETA OFF-TRACK, WAYPOINT ARRIVAL ALARM, SHALLOW DEPTH ALARM, HAZARD ALARM				
USER CHART	CREATING AND DISPLAY OF USER CHART				
ETC	MOB MONITORING, ANCHORAGE MONITORING, FIXED OBJECT, BACKUP ARRANGEMENTS, CALCULATION CURRENT WITH GPS, GYRO, SPEED LOG DAT				
POWER SUPPLY	100-230 VAC, 1PHASE, 50/60Hz				
OPERATION ENVIRONMENT	TEMP -15°C - +55°C HUMIDITY 93% OR LESS AT 40C VIBRATION : IEC60945 Ed.4				

COMPONENT

STANDARD	OPTION
MAIN UNIT: SCD-2000(19") SCD-2000(23") SCD-2300(23") KEYBOARD MONITOR AD Converter	RSC



 **SAMYUNG ENC Co.,Ltd.**

Head Office : 69, Sangni-Ro, Youngdo-Gu, Busan, Korea, 606-083
Tel : 82-51-601-5530(Rep.) Fax : 82-51-413-4446

A/S Center : 1, Ilsanbong-Ro, Yungdo-Gu, Busan, Korea, 606-819
Tel : 82-1577-0198(ARS) Fax : 82-51-416-5515