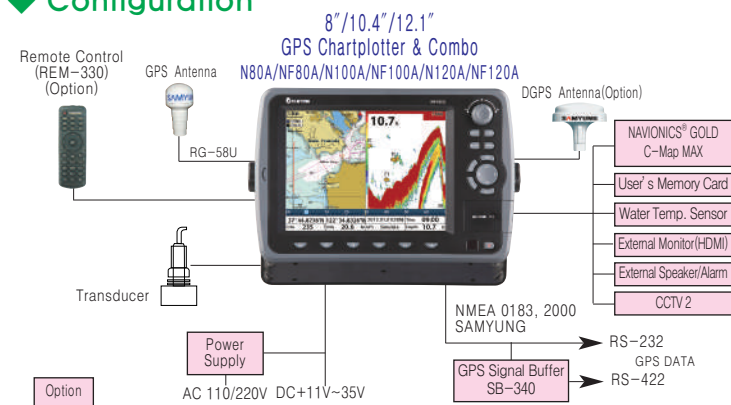


◆ Specification

Spec.	Model	N80A/N100A/N120A	NF80A/NF100A/NF120A
Display		8"/10.4" (800 x 600 pixels) / 12.1" (1024 x 768 pixels) LED Backlight	
Receiving channel & Tracking satellite		50 Channels 16 Satellites / Digital 16 Channels multi-tracking type	
Supply voltage		11 to 35 V DC Approx. 40W	
Operating temp.		-10°C ~ 50°C	
Display mode		normal, true-motion, course-up, northup, head-up function	
Alarms		Arrival radius, anchor, XTE, danger, too shallow, too deep, fish, temperature, temperature rate, low battery, low fuel(optional), loss of DGPS fix, radar guard zone, dangerous AIS vessels.	
Chart/User card		SAMYUNG MAP / NAVIONICS® GOLD / C-Map MAX / SD Card 2 slot, USB 1slot	
Waypoints		30,000 waypoints (Event Mark : 48, Mark Color : 16)	
Routes		100 Routes, with up to 100 points each	
Tracks		By time or distance, 10 tracks of 30,000 points	
Chart datums		216 Chart datums(1/2000~1/37,500,000)	
Chart scale		0.2 ~ 500 nm	
Interface		NMEA 0183, NMEA 2000	
Frequency		-	50/200KHz
Output		-	600W/1KW/1.2KW
Depth Range		-	3m~1,500m
Color Display		-	16 colors
Brightness		-	10-step
Screen Moving Speed		-	super fast, fast, medium, low, stop
Battery Voltage Display		-	Voltage number dispaly
AUTO GAIN Adjustment		-	OFF/ON
A-Mode Display		-	OFF/ON
Demo Dispaly		-	OFF/ON
Weak Color Removal		-	0% ~ 75%

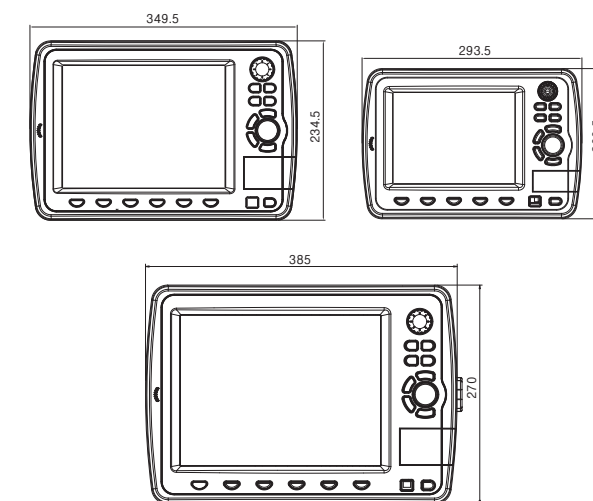
◆ Configuration



◆ Option

- Power Supply
- Remote Control
- NAVIONICS® GOLD
- C-Map MAX
- SD Card
- DGPS Antenna

◆ Dimensions



* Specification is subject to change without notice

◆ Component

- GPS Chartplotter & Combo 1Unit
- GPS Antenna 1Unit
- Transducer(NF80A/NF100A/NF120A) 1Unit
- Installation materials, Spare parts, Manual 1Set

SAMYUNG ENC Co.,Ltd.

Head Office : 69, Sangni-Ro, Youngdo-Gu, Busan, Korea, 606-083
 Tel : 82-51-601-5530(Rep.) Fax : 82-51-413-4446
 A/S Center : 76, Jeoryeoung-Ro, Yungdo-Gu, Busan, Korea, 606-802
 Tel : 82-1577-0198(ARS) Fax : 82-51-416-5515
 Http : //www.samyungenc.com

ISO 9001:2000 / KS A 9001:2001
 Certificate No. : RQM0645



www.samyungenc.com

8"/10.4"/12.1"

GPS Color Chartplotter & Combo

N80A/NF80A, N100A/NF100A, N120A/NF120A

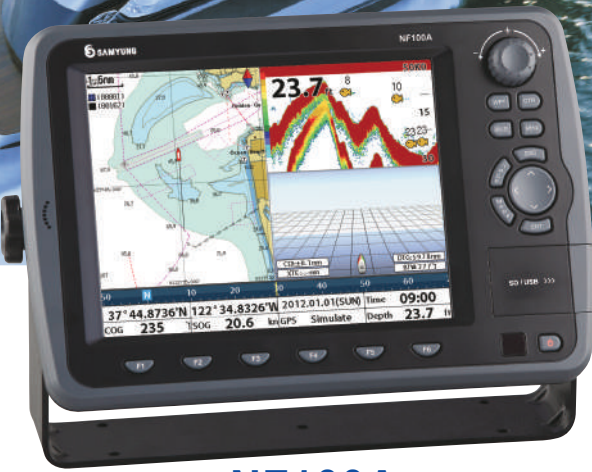


- ▶ The best map loading time with high performance CPU
- ▶ User friendly menu(windows type)
- ▶ Perfect multi player with external equipment
- ▶ Advanced auto-depth function

SAMYUNG ENC Co.,Ltd.



★High speed CPU
★Displays fish size



NF100A



NF80A



N120A



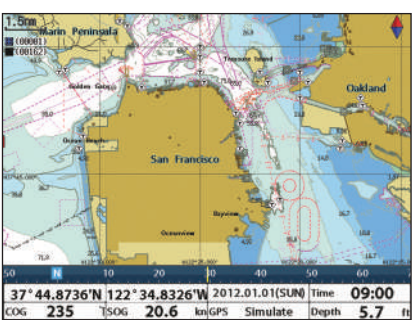
★Sophisticated Design
★Perfect multiplayer



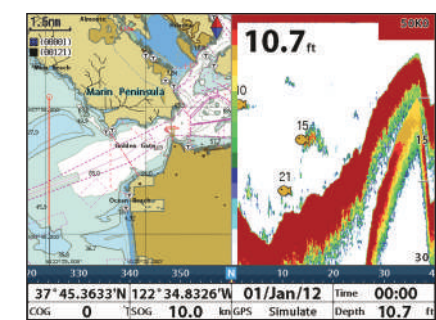
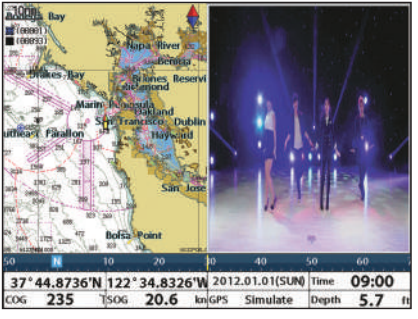
N100A

◆ Features

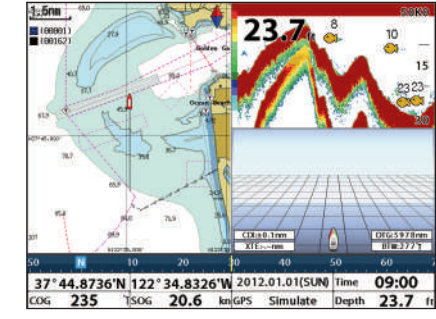
- High intensity and high definition display with high resolution TFT LED Applied
- LED backlighting adjustable to 10 different brightness levels
- NAVIONICS® GOLD / C-Map MAX available utilizing SD card input
- Plays movies, videos and music from SD or USB input
- 512/1024MB internal memory and embedded with standard SAMYUNG S-MAP
- NMEA(0183/2000) interface (AIS, NAVTEX, DSC, Data repeater, Fuel control etc.)
- Multiple language support (English, Chinese, Russian, etc.)
- DGPS (including WAAS, MSAS, EGNOS) provide greatest accuracy possible
- User friendly menu(windows type)
- Perfect navigational interface with Auto Pilot / Engine Controls
- Advanced auto-depth function (NF80A/NF100A/NF120A)
- Displays fish size (NF80A/NF100A/NF120A)
- Utilizes dual frequency system (50/200 kHz) for detection of small fish groups (NF80A/NF100A/NF120A)
- Features upgraded auto range, gain output and pulse length in our latest fish finding circuitry (NF80A/NF100A/NF120A)
- Utilizes high performance transduce for detection of individual and small fish (NF80A/NF100A/NF120A)



• Two split screen (Chart / Video)

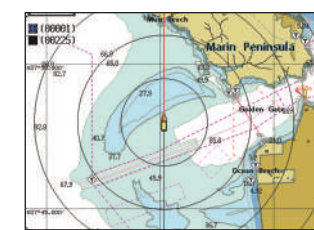
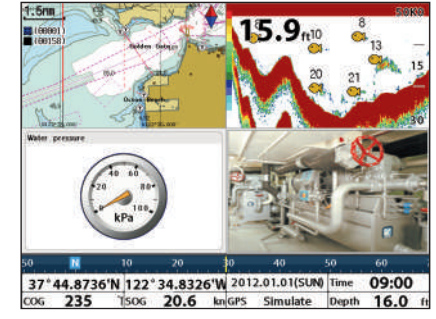


• Three split screen (Chart / Fishfinder / Highway)

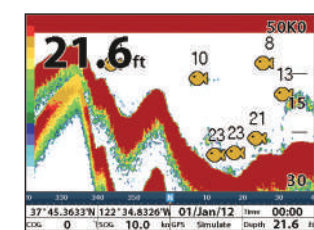


- High quality SAMYUNG MAP displayed on the high resolution LED
- NAVIONICS® GOLD / C- Map MAX can be displayed on the high resolution LED (SD Card)
- Display multiple functions on split screen

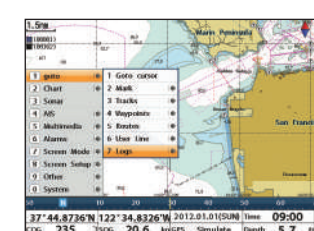
• Four split screen (Chart / Fishfinder / Video / Data)



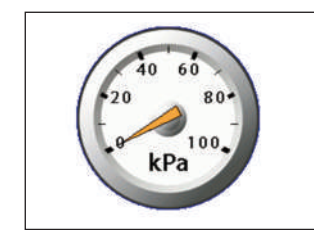
- High sensitivity GPS/DGPS Antenna can be used
- Adopted digital 50 channels multitracer technique
- AIS information can be displayed on the plotter when connected to the compatible AIS receiver (NMEA0183)



- Displays fish size
- Dual frequency(50/200kHz) transducer (Water temperature, speed sensor)
- Fishfinder screen setting available in Auto/Manual mode and Pause/Playback mode



- User friendly menu
- Simple & easy to use



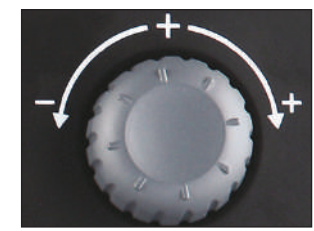
- NMEA 2000 interface
- Data repeater, Fuel control etc.



- Possible to input the external video
- CCTV(Composite)= 2Channel
- S-Video(NTSC/PAL) = 1Channel
- Multi display available with HDMI method



- Movies, music, video clips can be played using SD CARD or USB drive



- User friendly with rotational Encoder key applied which enables to maximize, minimize, and change direction



- Applied SD/USB Media Card Port enables the user to use various function (SD=2SLOT, USB=1SLOT)



- External Alarm and External speaker can be connected