

1. Unpack the box.



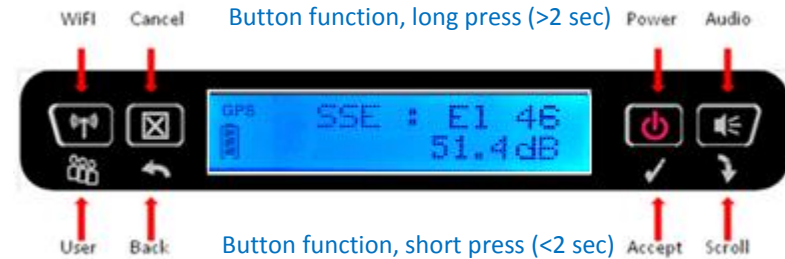
2. Insert the SIM card supplied by your service provider.



3. Install the battery and completely charge it before using the terminal.



4. Power on the UT by long pressing the Power button (>2 seconds).




5. Set up the UT in an open area and allow it to acquire a GPS fix. The GPS satellite icons on the display will indicate when the UT can see the GPS satellites. The GPS icon will go solid, and the satellite icons will disappear when the UT has a fix.

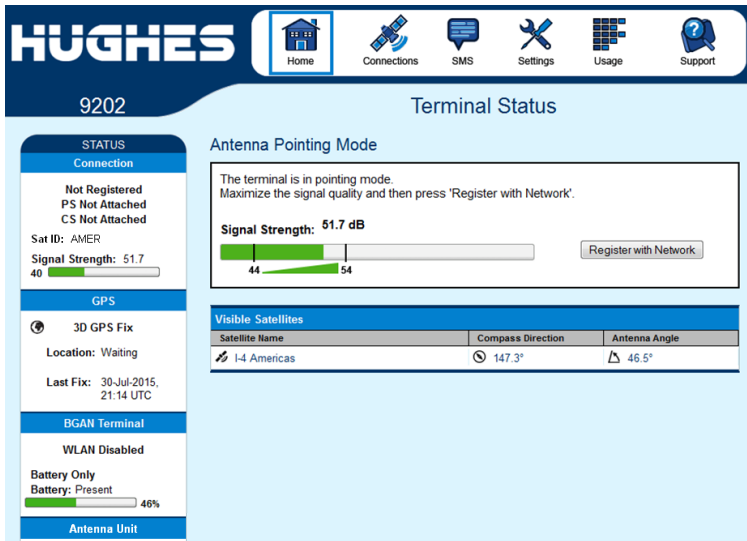


6. Point the UT at the satellite using the pointing information on the LCD.

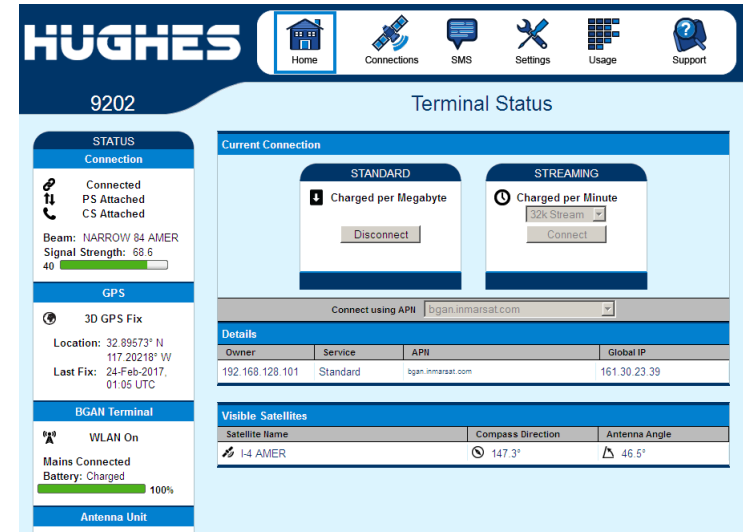


7. Maximize the signal shown on the LCD by adjusting the direction and elevation angle of the unit. You can also press the audio button to get an audible indication of the signal. Signal strength should be 50 to 54dB.
8. Connect an Ethernet cable from your computer to the UT. Open your browser and enter IP address 192.168.128.100 to access the home page of the UT Web User Interface.

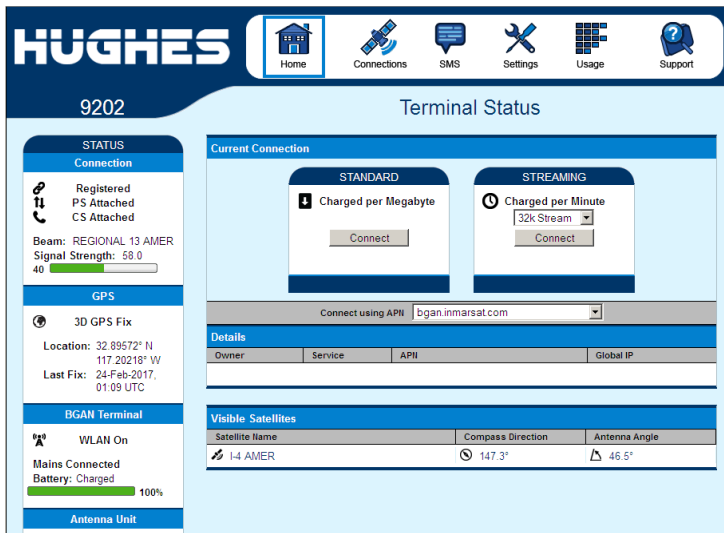
9. You can turn on Wi-Fi by long pressing (>2 seconds) the  button. Once the icon shows solid on the LCD, you can connect wirelessly to the UT. Default SSID is “Hughes 9202”. The home page address is 192.168.128.100.



11. To get Internet access, press the “Connect” button in the Standard or Streaming section.



10. Press the “Register with Network” button. The UT will register and attach to the Inmarsat network.



12. The support page shows useful information about the terminal and can be used to get logs or reset the configuration.

